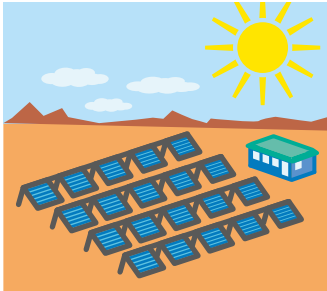
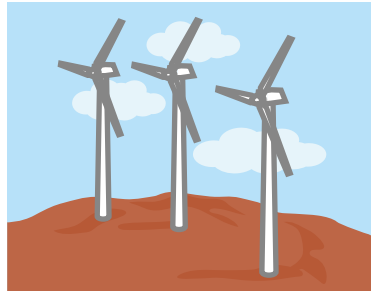


# Types of Renewable Energy

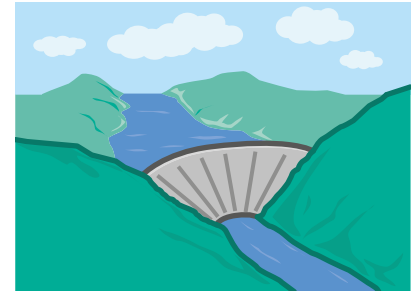
Solar power



Wind power



Hydroelectric power



Energy source	Description
Biomass	Burning wood, plants or animal waste for fuel, or producing biofuels out of special plants
Wind	Using the wind at sea or on land to drive turbines, which generate electricity
Hydro	Using the energy of falling water to drive turbines inside dams, which generate electricity
Tidal	Using the changing sea levels to drive electricity-generating turbines inside dams
Geothermal	Heat from deep in the Earth's crust turns water into steam, which drives turbines that generate electricity
Wave	Wind causes waves, which drive electricity-generating turbines
Solar	Photovoltaic cells convert sunlight into electricity